

An Analysis Study on the Effect of Increasing Carbon Dioxide Gas and Climate Change on Temperatures in Libya

Haifa M. Ben Miloud^{1*} , Amel Saad Ashargawi² 

¹Department of Atmospheric Scienc, Faculty of Science, University of Tripoli, Libya.

² Department of Statistics, Faculty of Science, University of Tripoli, Libya.

E-mail: ¹ regcm00@Yahoo.com, ² amelsh@hotmail.com .

ARTICALE INFO

Article history:

Received 28 March 2023

Received in revised form 3 April 2023

Accepted 8 May 2023

Available online 20 June 2023

KEYWORDS

Temperature, CO₂, global,
climate change, Libya.

ABSTRACT

Carbon dioxide CO₂ increased in the atmosphere and had a significant impact on global warming on the world as a whole. Libya had the share of high temperatures in recent years reached 22.6 °C compared to 1980, which was about 20.9 °C. It was noted that the increase in the time series of carbon dioxide over Libya, the value was 338.8 PPM in 1980, to reach 409.6 PPM in 2019. In this study, the statistical analysis of the data showed that there is a percentage of the effect gas carbon dioxide on the temperature up to 32.6%, and the relationship between positive, so that the correlation coefficient is 0.571. Through analysis of variance to test the significance of the quality of the model, there is a linear relationship between the two variables, and the value of t indicates that there is an effect of carbon dioxide on temperatures.

*Corresponding author.

دراسة تحليلية حول تأثير زيادة غاز ثاني أكسيد الكربون والتغير المناخي على درجات الحرارة في ليبيا

هيفاء بن ميلود¹، أمل سعد الشرقاوي²

¹ قسم علوم الغلاف الجوي، كلية العلوم، جامعة طرابلس، ليبيا.

² قسم الإحصاء، كلية العلوم، جامعة طرابلس، ليبيا.

ملخص: تعد زاد ثاني أكسيد الكربون (CO_2) في الغلاف الجوي وكان له تأثير كبير على ظاهرة الاحتباس الحراري على العالم ككل. وبلغت حصة ليبيا من درجات الحرارة المرتفعة في السنوات الأخيرة 22.6 درجة مئوية مقارنة بعام 1980 والتي كانت حوالي 20.9 درجة مئوية. لوحظ أن الزيادة في السلسلة الزمنية لثاني أكسيد الكربون فوق ليبيا بلغت قيمتها 338.8 جزء في المليون عام 1980 لتصل إلى 409.6 جزء في المليون في عام 2019. وفي هذه الدراسة أظهر التحليل الإحصائي للبيانات أن هناك نسبة مئوية من تأثير غاز ثاني أكسيد الكربون على درجة حرارة تصل إلى 32.6%، وكانت العلاقة بين المتغيرين موجبة، بمعامل الارتباط 0.571.

حيث استخدام أيضا تحليل التباين لاختبار معنوية جودة نموذج ولاحظنا وجود علاقة خطية بين المتغيرين وان النموذج معادلة خط الانحدار يمكن الاعتماد عليه. السكنية.

Keywords: Temperature, CO_2 , global, climate change, Libya.

1. INTRODUCTION

Carbon dioxide is Earth's most important greenhouse gas: a gas that absorbs and radiates heat. Unlike oxygen or nitrogen (which make up most of our atmosphere), greenhouse gases absorb heat radiating from the Earth's surface and re-release it in all directions—including back toward Earth's surface. Without carbon dioxide, Earth's natural greenhouse effect would be too weak to keep the average global surface temperature above freezing. By adding more carbon dioxide to the atmosphere, people are supercharging the natural greenhouse effect, causing global temperature to rise. According to observations by the NOAA Global Monitoring Lab, in 2021 carbon dioxide alone was responsible for about two-thirds of the total heating influence of all human-produced greenhouse gases,[1].

Over the 20th century, the atmospheric concentrations of key greenhouse gases increased due to human activities. The stated objective (Article 2) of the United Nations Framework Convention on Climate Change (UNFCCC) is to achieve stabilization of greenhouse gas concentrations in the atmosphere at a low enough level to prevent "dangerous anthropogenic interference with the climate system [2], and temperatures rose between 0.08 to 0.14 degrees Celsius during the years 1951-2012, and this is the result of the total increase in solar radiation, and carbon dioxide gas is considered the first factor in climate change centered on the rise in temperatures [3], and many reports have confirmed that the basic components The external influence over the past century has been man the rate of anthropogenic input of CO_2 to the atmosphere exceeds the rate at which physicochemical and biological processes remove CO_2 . The resulting increase in the atmospheric CO_2 concentration is widely perceived as a major cause of the present increase in global temperatures [4]. The processes that remove part of the additional atmospheric CO_2

is dissolution into water bodies. This results in an increase in dissolved CO₂ and HCO₃⁻ concentrations, and it causes carbonic acid ocean acidification. Furthermore [5].

Rising carbon dioxide and associated climate change may significantly affect agricultural production around the world [6], and land cover changes led to estimated increases in atmospheric CO₂ of between 22 and 43 ppmv. [7], with an increase in temperature for the future, IPCC(2007) estimated that Earth would warm between two and six degrees Celsius over the next century, depending on how fast the carbon dioxide emissions grow. Given the effects of CO₂ have on radiation and climate change, many researchers and policymakers have focused on finding the CO₂ reduction targets to lessen its effects [8].

IPCC defines 'detection' as the process of demonstrating that climate has changed in some statistical sense, which means that the likelihood of occurrence by chance due to internal variability alone is small. Besides statistical analysis of observed data, typically climate models are used to predict the expected responses to external forcing and then the consistency of this response pattern is evaluated with respect to different components of the climate system [9]. And Libya had the share of climate change, which made it more one of the driest countries in the world, where the demand for water is far greater than its renewable supply. Projected temperature increases as well as rise in sea levels and increased incidence of extreme weather events has sparked concerns of depleting water resources, threats to coastal communities and reduced agricultural eases [10].

2. Study objectives

1. Find out the effect of carbon dioxide gas on temperatures in Libya.
2. See some of the results reached by other parties to know the current situation of carbon dioxide gas on temperatures in general.

3. Area study and data

The annual average of both temperatures and carbon dioxide gas was obtained over Libya located between latitudes 20-33° and longitudes 10-25°, as shown in figure(1).

during the years 1980-2019, where data temperatures from NASA [11], and carbon dioxide gas at the National Oceanic and Atmospheric Administration (NOAA) [12].

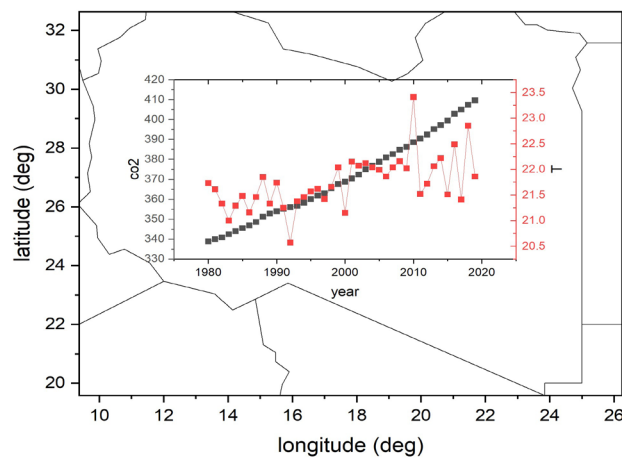


Figure 1. The relationship between temperature and carbon dioxide on the study area

4. Data Analysis and Discussion

When analyzing the data, it was found that the temperature over Libya for 1980 was about 21.73 °C, while the amount of carbon dioxide gas was about 338.8 PPM, and the temperature has been increasing until the last years reach to 22.85 °C as well as the amount of CO2 reach to 407.38 and 409.6 PPM in 2018 and 2019 respectively, while in 2010, which is considered the highest year in temperature rises in the world as a whole, many studies confirm this, including [13], and when analyzing it turns out that 2010 is really high as it reached about 23.41 °C in Libya.

One of the reasons for the rise in temperatures in the world as a whole is an increase in carbon dioxide levels. In our current study, statistical methods have been used to clarify this rise.

To determine the type and strength of the relationship between the two variables carbon dioxide (CO2 PPM) and temperature (°C) and it was found to be equal to (0.571), i.e. there is an average direct correlation between CO2 and temperature ,through the Pearson correlation coefficient formula that used is:

$$r = \frac{\sum (x_i - \bar{x})(y_i - \bar{y})}{\sqrt{\sum (x_i - \bar{x})^2 \sum (y_i - \bar{y})^2}} = \frac{S_{xy}}{S_x S_y} \dots\dots\dots (1)$$

Where S_{xy} covariance xy.

S_x standard deviation x.

S_y standard deviation y.

The terms in that formula are:

x_i : values of the x-variable in the data set (carbon dioxide).

y_i : values of the y-variable in the data set (temperature (°C)).

After that, the effect of the increase in carbon dioxide on the temperature was studied by considering carbon dioxide (as independent variable) on the temperature (as dependent variable) analyzing the data of the two variables during the period (1980-2019) using simple linear regression equation:

$$y = a + bx \dots\dots\dots (2)$$

Spread points between the two variables were plotted as follows:

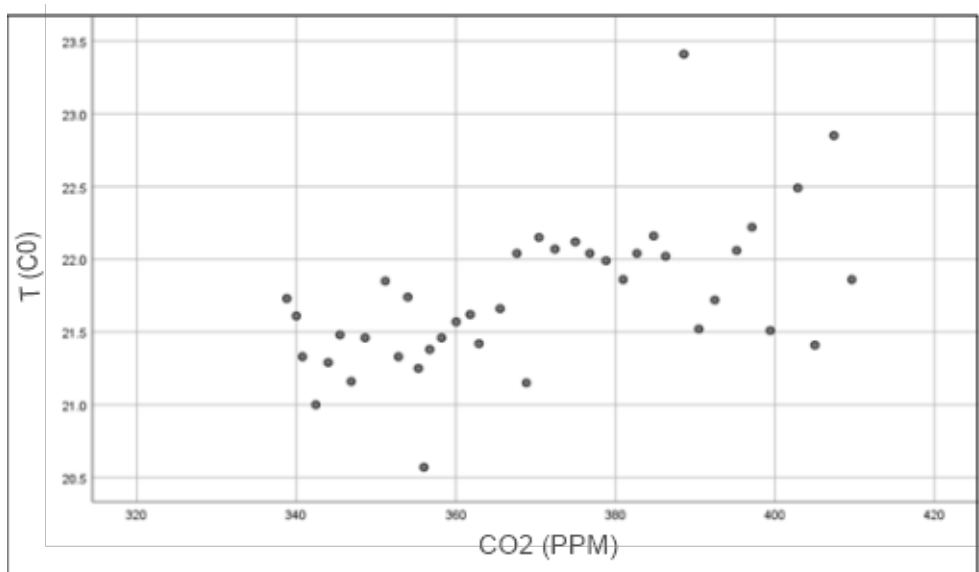


Figure 2. Scatterplot of CO₂ (PPM) and temperature (°C).

Table 1. Additional regression Results for the percentage of influence of CO₂ on temperature

R	R Square	Std. Error of the Estimate
0.571 ^a	0.326	0.423
a. Predictors: (Constant), CO ₂ .		

From the above table, we find that the percentage of the effect of the independent variable CO₂ on the dependent variable Temperature is equal to 0.326, meaning that carbon dioxide affects by (32.6%) the temperature, and the square of the correlation coefficient R is used to find out the percentage of variation in the dependent variable and through it the variable can be predicted independent, explaining the error estimate approx. 0.423.

We depended on the analysis of variance to test the significance of the quality of the model, where we note that there is a linear relationship and that the level of significance for F is less than 0.05, that meaning there is a relationship between the independent variable and the dependent variable and that the regression model is significant, and therefore we reject the null hypothesis and accept the alternative hypothesis that the model is significant statistic and its results can be depend upon, see Table 2.

Table 2. Results of ANOVA^a

	Sum of Squares	df	Mean Square	F	Sig.
Regression	3.289	1	3.289	18.407	0.000 ^b
Residual	6.790	38	0.179		
Total	10.079	39			
a. Dependent Variable: Temperature (°C), b. Predictors: (Constant),CO ₂ .					

The following table showed the parameters of the model:

Table 3. Results Coefficients^a

	Unstandardized Coefficients B	Std. Error	Standardized Coefficients Beta	t	Sig.
Constant	16.637	1.191		13.976	0.000
CO ₂	0.014	0.003	0.571	4.290	0.000
a. Dependent Variable: Temperature (°C)					

Table 3 shows the value of t indicated to that the effect of CO₂ on temperature cannot reach zero, meaning that there is an effect of CO₂ on temperatures. Through the Table 3, the regression equation can be written, as we obtained the coefficients of the regression line as following:

$$y = 16.637 + 0.014x$$

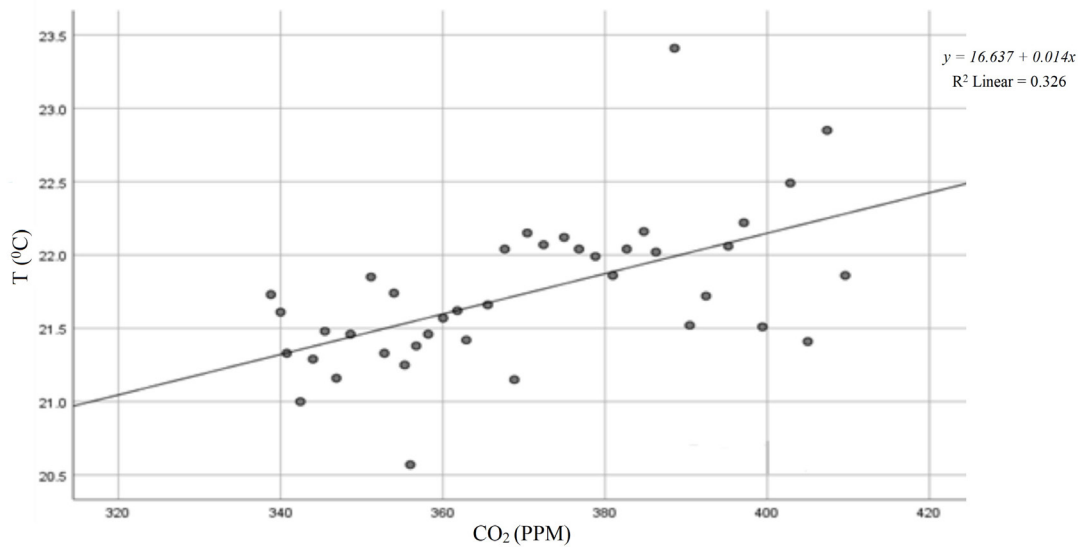


Figure 3. Scatterplot of CO₂ (PPM) and temperature (°C).

We also noted that the points approach from the line and that the residuals are distributed according to the normal distribution, which is a condition for applying the regression equation.

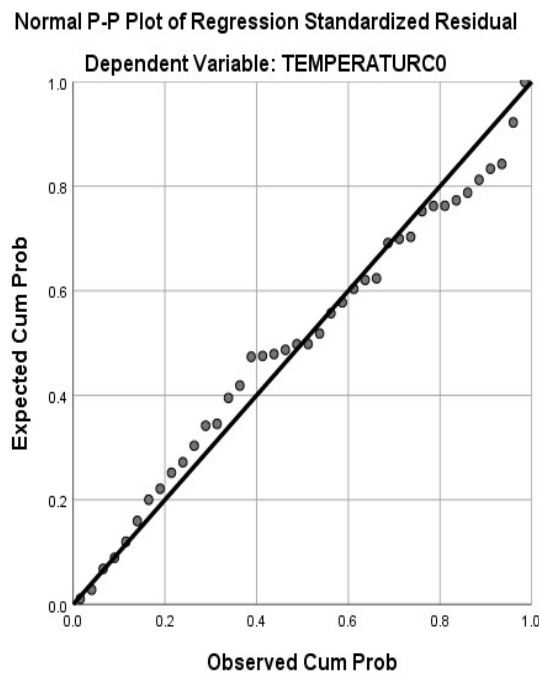


Figure 4. Normal P-P plot of regression residual.

5. Conclusion

Carbon dioxide CO₂ increased in the atmosphere, Libya had the share of high temperatures in recent years reached 22.6 °C compared to 1980, which was about 20.9 °C. It was noted that the increase in the time series of carbon dioxide over Libya, the value was 338.8 PPM in 1980, to reach 409.6 PPM in 2019. Through this study, the relationship of carbon dioxide gas and the increase in

temperature in recent years is explained by the statistical relationships shown in the Pearson correlation coefficient, where the correlation coefficient was about 0.571, and the percentage of the effect of carbon dioxide gas on the temperature about 32.6%.

And depended study on the analysis of variance to test the significance of the quality of the model, where we note that there is a linear relationship and that the level of significance for F is less than 0.05, that meaning there is a relationship between the independent variable and the dependent variable and that the regression model is significant ,and the value of t indicated meaning that there is an effect of CO₂ on temperatures.

Author Contributions: All authors contributed to the study's conception and design. All authors are equal in material preparation, data collection, and analysis. The first draft of the manuscript was written by (Haifa.) and (Amel). All authors have read and agreed to the published version of the manuscript.

Funding: This research received no external funding.

Informed Consent Statement: Not applicable.

Data Availability Statement: Publicly available datasets were analyzed in this study. This data can be found here: , <https://giovanni.gsfc.nasa.gov> ,and https://psl.noaa.gov/gcos_wgsp/Timeseries/Data/co2.

Acknowledgments: We appreciate anonymous reviewers' helpful comments and revisions.

Conflicts of Interest: The authors declare no conflict of interest

6. REFERENCES

- [1] Rebecca . L. and Dlugokncky , “Climate Change: Atmospheric Carbon Dioxide”, 2023, <https://www.climate.gov/news>. , [2023].
- [2] Susan .S, Gian.K.P, Reto .K, and Pierre ,“ FIrreversible climate change due to carbon dioxide emissions”. *PNAS Journal*, vol 106, no.6 , pp.1704-1709, Feb 2009.
- [3] Stocker, T.F., D. Qin, G.-K. Plattner, M. Tignor, S.K. Allen, J. Boschung, A. Nauels, Y. Xia, V. Bex and P.M. Midgley (eds.), IPCC, “Climate Change 2013” , *The Physical Science Basis. Contribution of Working Group I to the Fifth Assessment Report of the Intergovernmental Panel on Climate Change*. Cambridge University Press, Cambridge, United Kingdom and New York, NY, USA, pp. 1535 , 2013.
- [4] Core Writing Team, R.K. Pachauri and L.A. Meyer (eds.), IPCC, “Climate Change 2014” *Synthesis Report, Contribution of Working Groups I, II and III to the Fifth Assessment Report of the Intergovernmental Panel on Climate Change* , Geneva, Switzerland, pp .151, 2014.
- [5] John A. Raven, “The possible roles of algae in restricting the increase in atmospheric CO₂ and global temperature”, *European Journal of Phycology*, vol 52, no.4, pp.506-522, Jul 2017.
- [6] Francesco N Tubiello, Frank Ewert , “Simulating the effects of elevated CO₂ on crops: approaches and applications for climate change”, *European Journal of Agronomy*, vol 18, no.1-2 ,pp 57-74,Dec 2002.
- [7] Victor Brovkin, Stephen Sitch, Werner Von Bloh, Martin Claussen, Eva Bauer, Wolfgang Cramer, “Role of land cover changes for atmospheric CO₂ increase and climate change during the last 150 years”, *Global Change Biology Journal*, vol 10, no.8, pp 1253-1266, Aug2004.
- [8] Hyunsoo Lee , and Hee-Woon Cheong, “Effects of Carbon Dioxide and Clouds on Temperature”, *Procedia Computer Science Journal Elsevier*, vol 139,pp 95-103, 2018.

[9] Adolf .S, Diego .M, Clare .C, Elisa G.G and X. S. L. “The causal structure between CO2 and global temperature”, *Scientific reports Journal*, pp.1-9, Feb 2016.

[10] OCHA, “Climate change threatens Libya’s economic development and sustainability” Last updated: 26 Aug 2021, <https://reports.unocha.org/en/country/libya> , [21 Feb 2023] .

[11] <https://giovanni.gsfc.nasa.gov>.

[12] https://psl.noaa.gov/gcos_wgsp/Timeseries/Data/co2.global.data.

[13] Hansen ,J., Ruedy .R., Sato ,M., & Lo ,K, “Global surface temperature change. *Rev. Geophys*”, vol 48 ,no . 4, pp.2-29, Jun , 2010.