

See discussions, stats, and author profiles for this publication at: <https://www.researchgate.net/publication/270463493>

Numerical aspects for efficient welding computational mechanics

Article in *Thermal Science* · January 2014

DOI: 10.2298/TSCI130227180A

CITATIONS

5

READS

221

3 authors:



Tarek Aburuga

University of Tripoli

4 PUBLICATIONS 25 CITATIONS

[SEE PROFILE](#)



A. Sedmak

University of Belgrade

497 PUBLICATIONS 4,366 CITATIONS

[SEE PROFILE](#)



Zoran Radakovic

University of Belgrade

49 PUBLICATIONS 237 CITATIONS

[SEE PROFILE](#)

NUMERICAL ASPECTS FOR EFFICIENT WELDING COMPUTATIONAL MECHANICS

by

Tarek Kh.S. ABURUGA^a, Aleksandar S. SEDMAK^{*a} and Zoran J. RADAKOVIC^a,

^aFaculty of Mechanical Engineering, University of Belgrade, Belgrade, Serbia

Original scientific paper
DOI: 10.2298/TSCI130227180A

The effect of the residual stresses and strains is one of the most important parameter in the structure integrity assessment. A finite element model is constructed in order to simulate the multi passes mismatched submerged arc welding SAW which used in the welded tensile test specimen. Sequentially coupled thermal mechanical analysis is done by using ABAQUS software for calculating the residual stresses and distortion due to welding. In this work, three main issues were studied in order to reduce the time consuming during welding simulation which is the major problem in the computational welding mechanics (CWM). The first issue is dimensionality of the problem. Both two- and three-dimensional models are constructed for the same analysis type, shell element for two dimension simulation shows good performance comparing with brick element. The conventional method to calculate residual stress is by using implicit scheme that because of the welding and cooling time is relatively high. In this work, the author shows that it could use the explicit scheme with the mass scaling technique, and time consuming during the analysis will be reduced very efficiently. By using this new technique, it will be possible to simulate relatively large three dimensional structures.

Key words: *efficient welding, thermal analysis, mechanical analysis*

Introduction

The welding process is considered as one the most important methods of the joining metals which is the most essential part in the engineering industries. Welding is defined by the American Welding Society (AWS) as a localized coalescence of metals or non-metals produced by either heating of the materials to a suitable temperature with or without the application of pressure, or by the application of pressure alone, with or without the use of filler metal [1]. There are many side effects during this process, the temperature changes in the alloy produce solid state transformations, and this change in the solid transformations will lead to changes in the material properties during the evolution of the process. These changes in the material properties within the heating and the cooling stages induce localized volumetric changes. The inhomogeneous elasto-plastic thermal strains will develop in the vicinity of the welding zone. The residual stresses as a result of the thermal strain will cause permanent distortions. Distortions introduce residual deformation that complicates the assembly of welded structures and reduces their quality. Also, in certain applications, this distortion may result in the structure being useless [1].

* Corresponding author, e-mail: asedmak@mas.bg.ac.rs

Theoretical background

Thermal analysis:

The governing equation for the three dimension conduction heat transfer according to Fourier's law:

$$k \left(\frac{\partial^2 T}{\partial x^2} + \frac{\partial^2 T}{\partial y^2} + \frac{\partial^2 T}{\partial z^2} \right) + Q = \rho c \dot{T} \quad (1)$$

Where T is temperature, λ thermal conductivity, Q Rate of internal heat generation, ρ density, c specific heat. Thermal boundary conditions are heat loss due to convection, taken into account using Newton's law:

$$q_c = h_c (T_s - T_0) q_c = h_c (T_s - T_0)$$

where h_c is the heat transfer coefficient, T_s is the surface temperature and T_0 is the ambient temperature, as well as heat loss due to radiation, modeled using Stefan-Boltzman law:

$$q_r = \varepsilon \sigma \left[(T_s + 273.15)^4 + (T_0 + 273.15)^4 \right]$$

where, ε is the emissivity, and $\sigma = 5.669 \times 10^{-8}$ is the Stefan-Boltzman constant.

The moving heat source is treated as a body heat flux with uniform density instead of thermal boundary conditions [[2]-7].

Mechanical analysis

For three-dimension brick element

The governing differential equation for three dimension mechanical problem

$$\begin{aligned} \frac{\partial \sigma_{xx}}{\partial x} + \frac{\partial \sigma_{xy}}{\partial y} + \frac{\partial \sigma_{xz}}{\partial z} + f_x &= 0 \\ \frac{\partial \sigma_{yx}}{\partial x} + \frac{\partial \sigma_{yy}}{\partial y} + \frac{\partial \sigma_{yz}}{\partial z} + f_y &= 0 \\ \frac{\partial \sigma_{zx}}{\partial x} + \frac{\partial \sigma_{zy}}{\partial y} + \frac{\partial \sigma_{zz}}{\partial z} + f_z &= 0 \end{aligned} \quad (2)$$

For two-dimension plate element

The governing differential equation for two dimension mechanical problem

$$\frac{\partial^4 w}{\partial x^4} + 2 \frac{\partial^4 w}{\partial x^2 \partial y^2} + \frac{\partial^4 w}{\partial y^4} = -\frac{p}{D} \quad (3)$$

The input data

The work of Henson [08] will be used as reference in order to validate the numerical simulations with the experimental results of Henson's work. Therefore, the same properties and welding parameters will be used in this part of work. Three- and two-dimension nonlinear transient heat transfer models are constructed in order to model submerged arc welding for the shown plate with the following characteristic as shown in Figure 1.

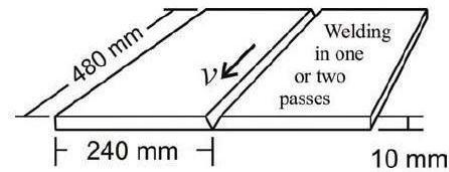


Figure 1 Thermal conductivity, Heat capacity, and Density vs. temperature

Thermal Properties

In order to analyze the transient energy distribution, the thermal conductivity, specific heat, and mass density (Figure 1) must be specified. If the heat source is able to make phase transformations the latent heat must be considered. Because of the nature of the welding process, these properties should be given as a function of temperature changes. For the latent heat both solid-liquid and liquid-gas phase changes are considered in this study. The numerical values of these quantities for the steel are shown in Table 1.

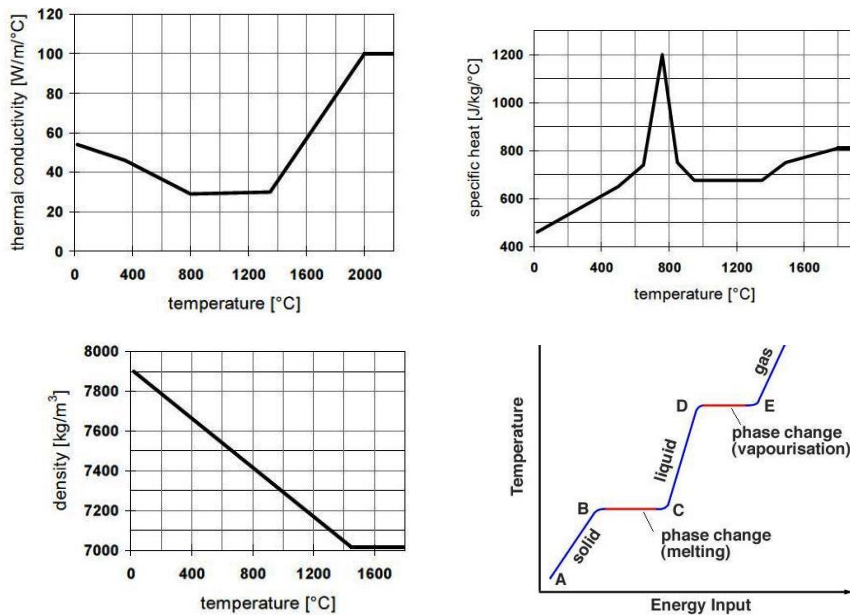


Figure 2 Thermal conductivity, Heat capacity, and density vs. temperature

Table 1 Latent heat values for the steel

$T_{Solid}=T_A$ C°	$T_{Liquid}=T_B$ C°	q_{AB} KJ	$T_{Liquid}=T_D$ C°	$T_{Gas}=T_E$ C°	q_{DE} KJ
1490	1540	272.1	2400	2450	6456

Welding Parameters:

The welding parameters for this model are as used in Henson’s work. These parameters are shown in Table 2.

Table 2 Welding parameters

η (-)	I (Amp)	U (Voltage)	V (mm/s)	Q (KJ/mm)
.98	530	27.2	4.57	3.1

Heat input Model:

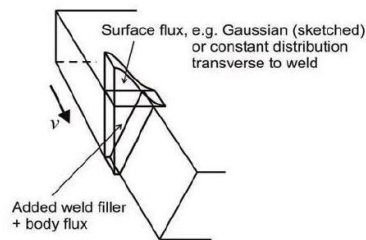
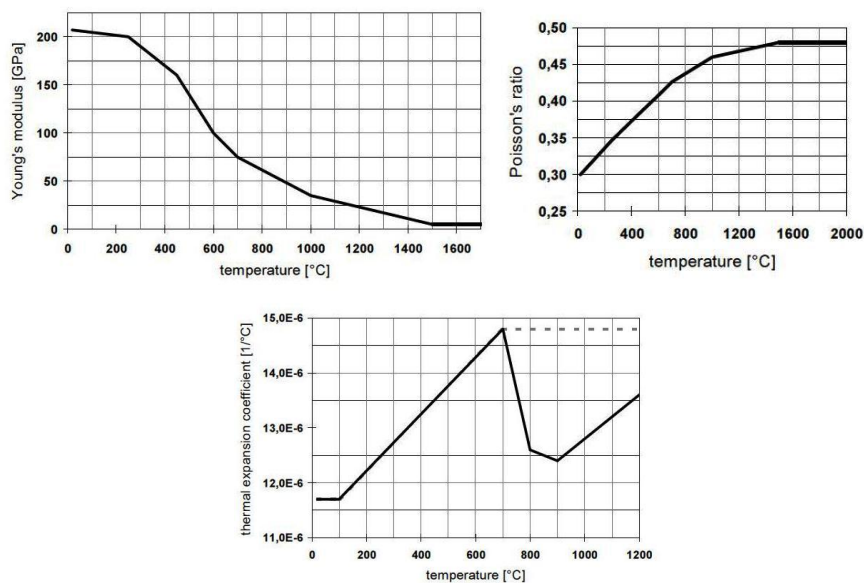
For submerged arc welding, Henson use heat input mode, where the heat input due to the arc was split into three parts:

- 1) Predefined temperature for the welded material,
- 2) Surface heat flux,
- 3) Body heat flux.

In this work, this model will be used because it is validated by the experiment, and because it has detailed description for the heat flux, and finally it simple to apply in the finite element codes [9]. Figure 3 shows this heat input model.

Mechanical properties:

For the structural analysis, the following mechanical properties must be specified. The yield strength curves as a function of temperature and strains is shown in Fig. 4, whereas modules of elasticity, Poisson's ratio, and thermal expansion are given in Figure 4, 5.

**Figure 3 Combined Henson's heat input model****Figure 4 Young's modulus, and Poisson's ratio, thermal expansion vs. temperature**

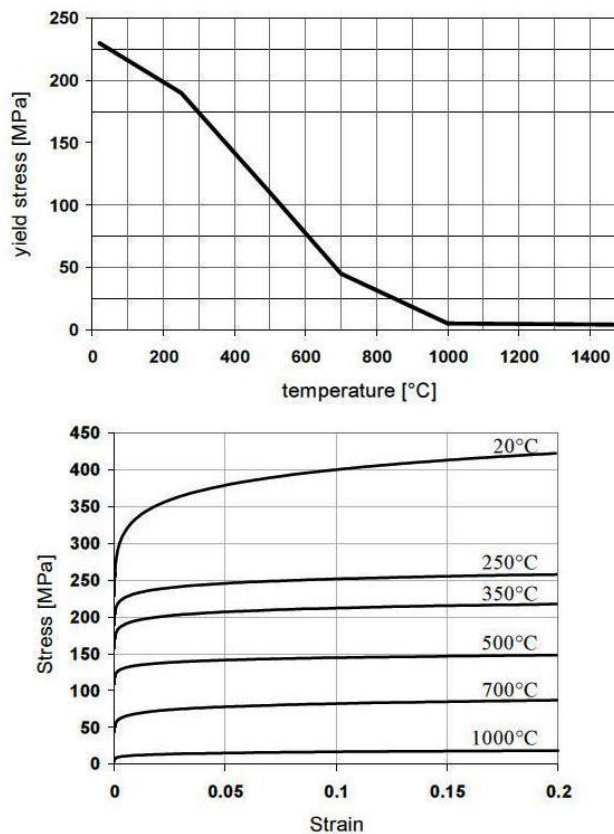


Figure 5 Yield stresses vs. temperature and strains

Problem's Dimensionality Effect

In order to reduce the time consuming of the simulation, the three dimension problem could be reduced to two dimension one. Shell element model is used to simulate the problem.

Problem's Dimensionality Effect in the Thermal Analysis

By using the shell element in thermal analysis, the simulation is successfully done with good agreement as shown in [10]. For the problems that does not need very accurate results such that where the residual stresses only are needed, two dimension simulation is a practical one especially for the large structures and multi runs welding.

Problem's Dimensionality Effect in the Mechanical Analysis

The following figures show this stresses obtained from the two- and three-dimension model: Figure 6 for the equivalent (von Mises) residual stress, Figure 7. for the longitudinal residual stress, Figure 8 for the transverse residual stress, and Figure 9 for the shear xy residual stress, indicating good agreement between the two models. Finally, for the strains, the equivalent plastic strain is shown in Figure 10.

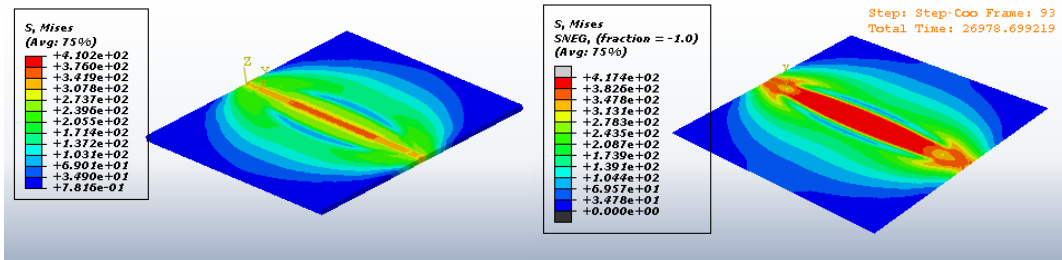


Figure 6. The equivalent (Mises) residual stress for 3D and 2D models

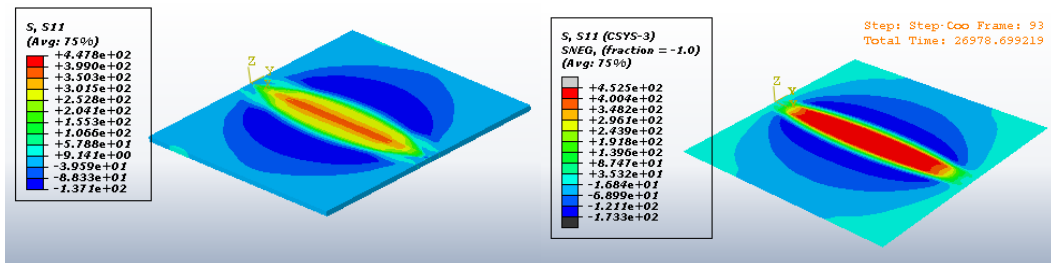


Figure 7. The longitudinal residual stress σ_x for 3D and 2D models

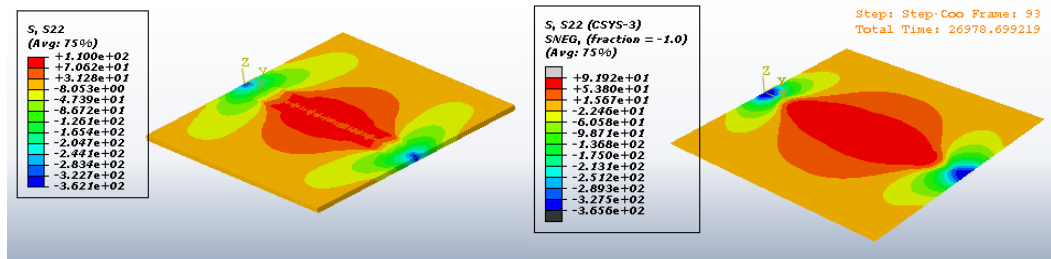


Figure 8. The transverse residual stress σ_y for 3D and 2D models

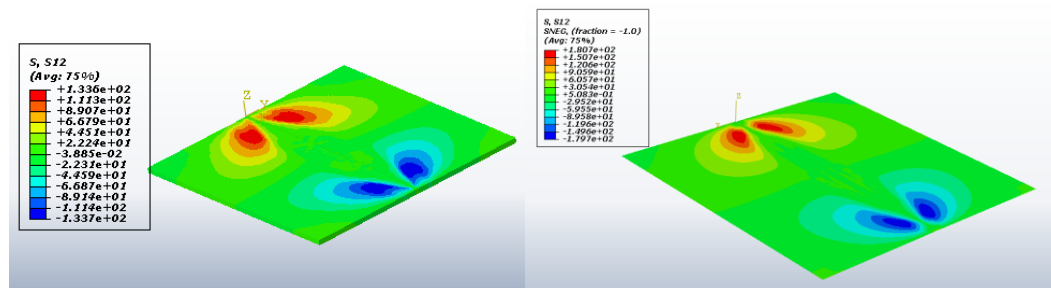


Figure 9. The shear residual stress τ_{xy} for 3D and 2D models

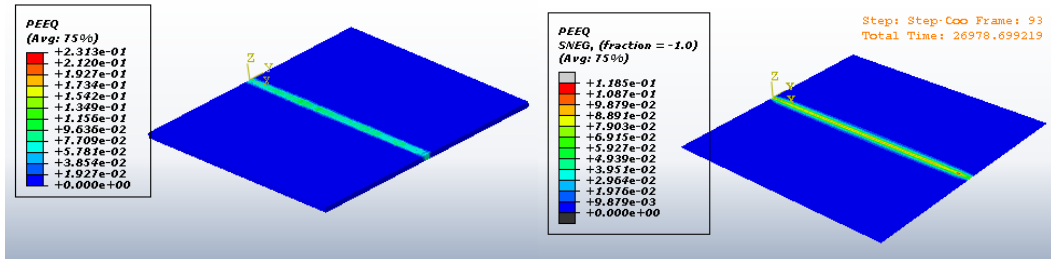


Figure 10. The equivalent residual plastic strain for 3D and 2D models

The normal and shear strains are shown in Figure 11 for the longitudinal residual plastic strain, in Figure 12 for the transverse residual plastic strain, and in Figure 13 for the shear residual plastic strain.

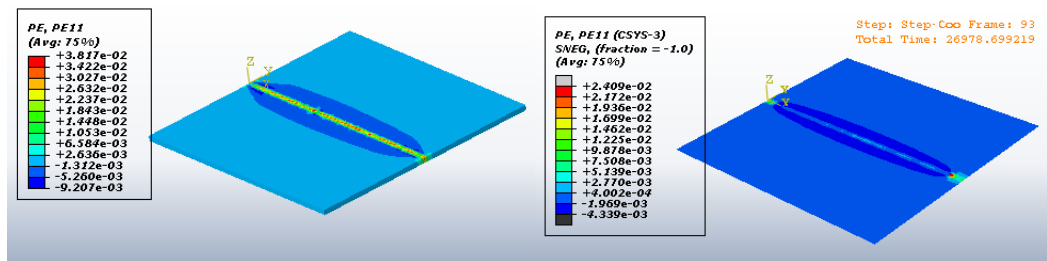


Figure 11. The longitudinal residual plastic strain p_{e_x} for 3D and 2D models

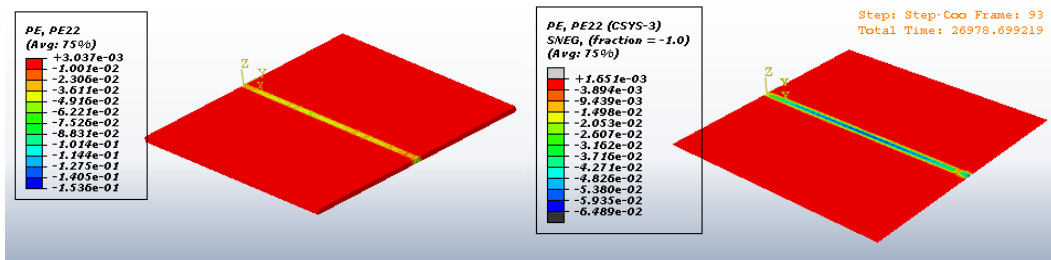


Figure 12. The transverse residual plastic strain p_{e_y} for 3D and 2D models

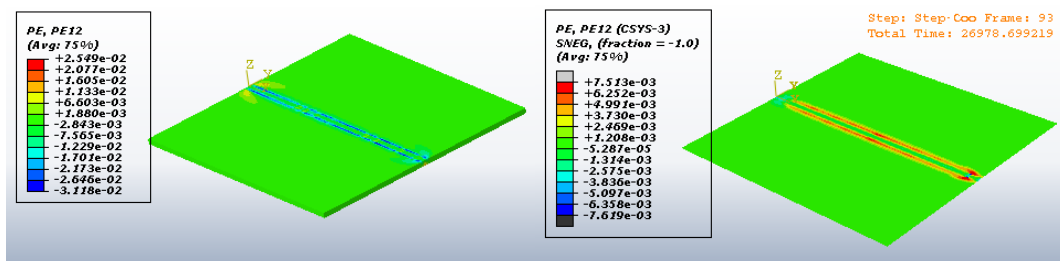


Figure 13. The shear residual plastic strain $p_{e_{xy}}$ for 3D and 2D models

Integration Scheme Effect in the Mechanical Analysis

In some cases like welding the stable time will be very small which will lead to very long time simulation, but, by using mass scaling technique this problem will be eliminated [9]. In the welding simulation, a quasi-static mechanical analysis is sufficient as the inertia effects in fusion welding processes are negligible as the weld pool is simplified considerably. Therefore, the mass scaling factor could be very high. In this study, the scaling factor was 10^7 ; the accuracy of the result was good as shown in Figure 14 for the equivalent (Mises) residual stress, 15 for the longitudinal residual stress, and Figure 16. for the transverse residual stress.

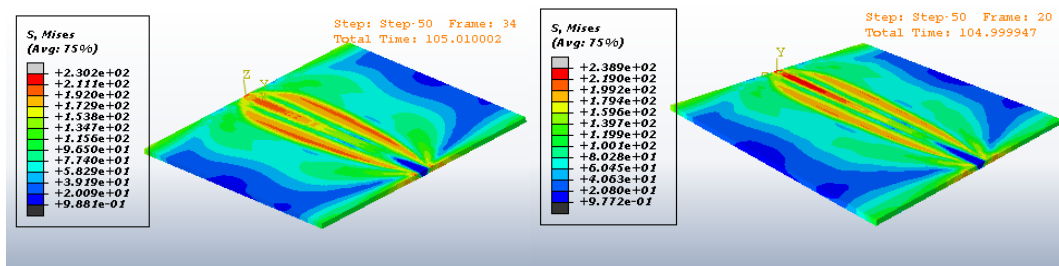


Figure 14. The equivalent stress for implicit and explicit models at the end of welding stage

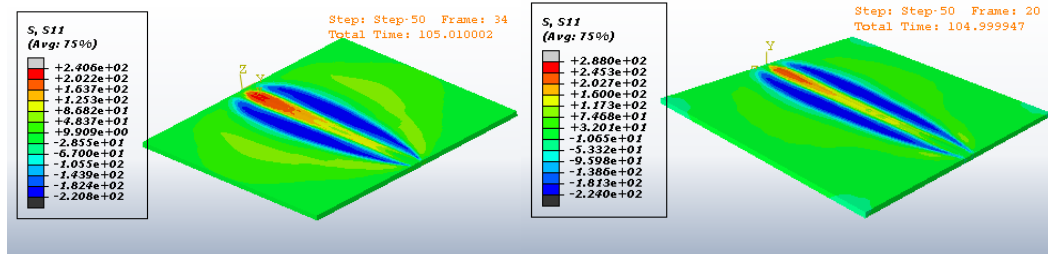


Figure 15. The longitudinal stress σ_x for implicit and explicit models at the end of welding stage

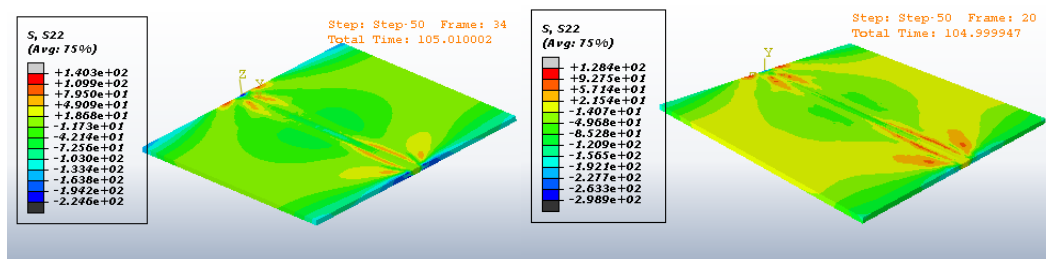


Figure 16. The transverse stress σ_y for implicit and explicit models at the end of welding stage

One important issue in this method, the cooling stage step should be done by the implicit scheme because it has long time to finish. Figure 17 shows the distribution of the longitudinal stress along path on the middle of the plate. The results for stress of the explicit and the implicit integration are almost identical.

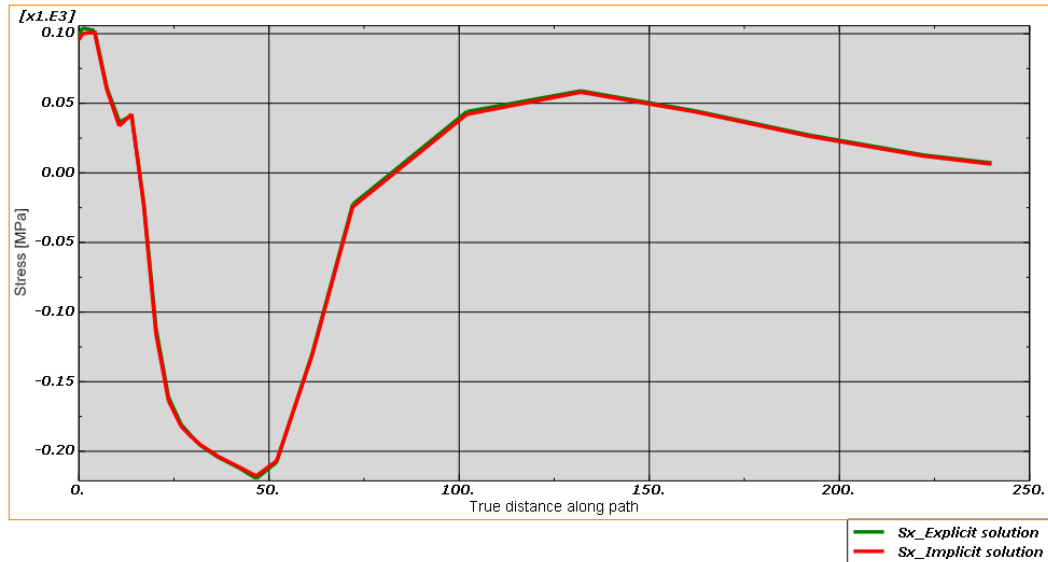


Figure 17. Comparison between explicit and implicit solutions

Conclusions

- In the present work, finite element models have been used to analyze the thermal and mechanical phenomena observed in welding processes. Thermal histories and residual stresses have been predicted.
- The main problem in computational welding mechanics (CWM) is the time consuming during the analysis. Different methods are used in this work in order to reduce time consuming. These methods are according to the dimensionality of the problem and the integration scheme.
- The one of research issue of central importance in developing the numerical approach is how to reduce time consuming. This work shows that it is possible to use two dimension shell element instead of three dimensional one with reasonable accuracy. There are some limitations in this method, it is not practical where the very accurate result is needed such as in weld pool studies, and it depends on the structure itself if it is plate or shell one or not.
- The second approach is by using explicit scheme instead of implicit scheme. This approach is very efficient one. By using mass scaling technique, it is possible to reduce the time consuming during the analysis by several orders in some cases.

References

- [1] Andres Anca, Alberto Cardona, Jose Risso, Victor D. Fachinotti, "Finite element modeling of welding processes", *Applied Mathematical Modelling* 35 (2011) 2, pp. 688–707
- [2] S.W. Wen, P. Hilton, D.C.J. Farrugia, "Finite element modeling of a submerged arc welding process", *Journal of Material Processing Technology* 119 (2001) 1-3, pp. 203–209
- [3] A. Bachorski*, M.J. Painter¹, A.J. Smailes, M.A. Wahab, "Finite-element prediction of distortion during gas metal arc welding using the shrinkage volume approach", *Journal of Materials Processing Technology* 92-93 (1999) 405-409

- [4] M. Berkovic, S. Maksimovic and A. Sedmak, "Analysis of Welded Joints by Applying the Finite Element Method," *Structural Integrity and Life*, vol. 4, no. 2, pp. 75-83, 2004.
- [5] V. N. Lazic, A. S. Sedmak, M. M. Zivkovic, S. M. Aleksandrovic, R. D. Cukic, R. D. Jovicic and I. B. Ivanovic, "Determining Of Cooling Time ($t_{8/5}$) In Hard Facing Of Steels For Forging Dies," *Thermal science*, vol. 14, no. 1, pp. 235-246, 2010.
- [6] S. Cvetkovski, L. P. Karjalainen, V. Kujanpaa and A. Ahmad, "Welding Heat Input Determination In TIG And Laser Welding of Ldx 2101 Steel by Implementing The Adams Equation For 2-D Heat Distribution," *Structural Integrity and Life*, vol. 10, no. 2, pp. 103-109, 2010.
- [7] Veljić, M. Perović, A. Sedmak, M. Rakin, N. Bajić, B. Medjo, H. Dascau, Numerical Simulation of the Plunge Stage in Friction Stir Welding, *Structural Integrity and Life*, Vol.11, No. 2, 2011, pp.131-134
- [8] J. Hansen, "Numerical modeling of welding induced stresses", Department of Manufacturing Engineering and Management, Technical University of Denmark, 2003.
- [9] ABAQUS/Standard user manual version 6.10, Hibbit, Karlsson, and Soresen, Inc., 2010
- [10] Tarek Aburuga, Ph.D. thesis, Temperature fields and residual stresses in welded joints of high-strength steel, Faculty of Mechanical Engineering, University of Belgrade, 2014

Paper submitted: February 27, 2013
Paper revised: September 19, 2013
Paper accepted: November 24, 2013